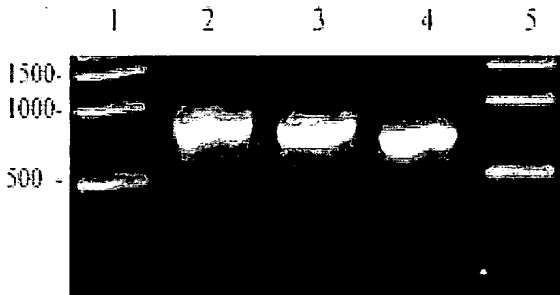


Figure 1

A



B

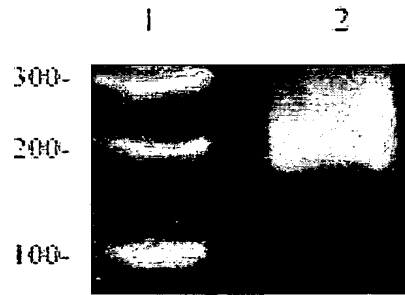


Figure 2

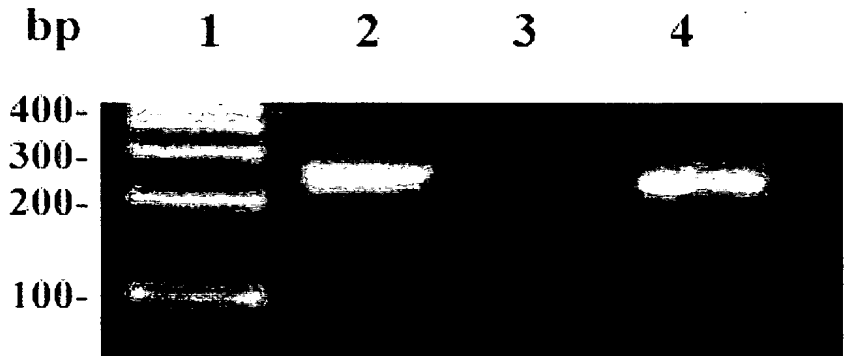


Figure 3

```

promVP4 1 -----ACCGAAATTAATACGACTCACTATAGGGGAA
promVP3 1 -----ATAGCATG-GTACC.....
              (KpnI)
promVP2 1 -----ATATTAGGCGCGCC.....G.....
              (AscI)
promVP1 1 AATTATTCTGAATTAGCAAGAAGATATTGT.....
              (NspV) L A R R Y C
promVP4 32 TTGTGAGCGGATAACAATTCCCCGGAGTTAATCCGGGACCTTTAATTCAACCCAACACAA
promVP3 45 .....
promVP2 46 .....
promVP1 61 .....
promVP4 92 TATATTATAGTTAAATAAGAATTATTATCAAATCATTGTATATTAATTAAATACTATA
promVP3 105 .....
promVP2 106 .....
promVP1 121 .....
promVP4 152 CTGTAAATTACATTTTATTTACAATCAAAGGAGATAT-AC-----
promVP3 165 .....T..GCTAGCTACCTACCTTCGAA
(NheI) (NspV)
promVP2 166 .....-..GGCGCCTATAAATCTGCAGA
              (NarI) (PstI)
promVP1 181 .....A-.-GACTAGTAATAAGCGGCCGC
(SpeI) (NotI)
promVP4 -----
promVP3 225 CTAGTATT
promVP2 225 TTAAT---
promVP1 239 TTTATTTA
  
```

Figure 4

native	1	---GGTGATGTGCAGAATGCTGTGCAAGGGGCTATGGTCAGGGTGGCAGATACAGTGCAA
Recombinant	1	ATG.....T.....
native	58	ACTTCAGCCACAAACTCAGAGAGGGTGCCTAACTTGACAGCAGTAGAAACTGGTCACACT
Recombinant	61
native	118	TCGCAGGCAGTACCTGGTGATACCATGCAGACTAGACATGTGATCAACAATCACGTGAGG
Recombinant	121T.....C.....
native	178	TCAGAATCTACAATTGAGAACTTCCTTGCCAGATCAGCGTGTGTTTTCTACCTAGAGTAC
Recombinant	181TG.....
native	238	AAGACAGGGACCAAAGAGGATTCCAATAGCTTCAACAATTGGGTGATTACAACCAGGCGA
Recombinant	241G.....G.....
native	298	GTGGCTCAACTACGTAGAAAAGTGGAAATGTTTACTTACCTACGGTTTGACATGGAAATC
Recombinant	301G.....T.....
native	358	ACCGTGGTCATTACAAGCTCGCAAGATCAGTCTACATCACAAAACCAGAATGCACCAGTG
Recombinant	361
native	418	CTAACACACCAGATAATGTATGTACCACCAGGGGGACCCATACCCGTAAGCGTGGATGAT
Recombinant	421A.....
native	478	TACAGCTGGCAAACATCCACCAACCCAGTATCTTTTGGACCGAAGGGAACGCTCCGGCA
Recombinant	481T.....
native	538	CGCATGTCAATTCCATTTATTAGCATAGGCAATGCGTATAGTAATTTCTACGATGGGTGG
Recombinant	541A.....
native	598	TCTCACTTCTCCCAGGCTGGCGTGTATGGCTTCACTACTCTGAACAACATGGGTCAATTG
Recombinant	601
native	658	TTCTTCCGGCACGTAACAAGCCCAACCCAGCCGCTATTACAAGTGTGGCGCGCATTTAC
Recombinant	661
native	718	TTCAAACCGAAACATGTACGCGCTTGGGTGCCTAGACCACCGCGCTTGTGTCCATACATC
Recombinant	721
native	778	AATAGCACGAATGTCAACTTTGAACCCAAGCCAGTGACTGAAGTACGTACCAACATAATA
Recombinant	781
native	838	ACAACG-----
Recombinant	841ATCATCGCGGCCGCACAGCTGTATACACGTGCAAGCCAGCCAGAACTCGCCCCG
native		-----
Recombinant	901	GAAGACCCCGAGGATCTCGAGCACCACCATCACCATCACCATCAC

Figure 5

4/7

Native	1	---TCTCCAACGGTTGAAGAGTGC
recombinant	1	ATG.....
Native	58	AACTCCACTATTACAACCTCAAGAGTGTGCCAATGTGGTGGTGGGGTACGGTGAATGGCCT
recombinant	61
Native	118	GAGTATCTGAGTGATAACGAGGCAACTGCTGAGGACCAACCAACGCAGCCGGACGTGGCC
recombinant	121
Native	178	ACTTGCCGTTTTTACACCCTAGACTCAGTCCAATGGGAGAATGGGTCACCAGGTTGGTGG
recombinant	181
Native	238	TGGAAGTTTCCCGACGCTCTAAGGGATATGGGATTATTTGGCCAAAATATGTACTACCAT
recombinant	241
Native	298	TACTTAGGCAGAGCCGGGTATACCATCCACGTACAATGCAATGCTTCCAAGTTTCATCAA
recombinant	301
Native	358	GGCTGTATCCTGGTAGTGTGTGTCCCTGAGGCGGAGATGGGAAGTGCCCAAACCTCAGGG
recombinant	361
Native	418	GTGGTCAACTACGAACACATTAGTAAGGGTGAGATCGCATCAAGGTTCACTACCACGACA
recombinant	421
Native	478	ACAGCAGAAGACCATGGCGTGCAGGCCGCGGTATGGAATGCTGGTATGGGCGTTGGAGTT
recombinant	481
Native	538	GGGAACCTTGACGATCTTCCCGCACCAATGGATCAACCTTCGCACCAACAACAGCGCCACA
recombinant	541
Native	598	ATTGTTATGCCATACGTAAATAGTGTACCAATGGACAATATGTATAGACATCACAACTTT
recombinant	601
Native	658	ACACTAATGATAATACCCTTTGTGCCTCTGGATTTTCAGCGCGGGTGCATCCACATACGTG
recombinant	661
Native	718	CCCATAACGGTGACAGTGGCCCCCATGTGTGCCGAGTACAATGGACTACGACTAGCTGGA
recombinant	721
Native	778	CACCAA-----
recombinant	781TAGTAG

Figure 6

native	1	GGTGATGTGCAGAAATGCTGTGCGAAGGGGCTATGGTCAGGGTGGCAGATACAGTGCAAAC
Recombinant	1	----.....T.....
native	61	TCAGCCACAAACTCAGAGAGGGTGCCTAACTTGACAGCAGTAGAAACTGGTCACACTTCG
Recombinant	57-.....
native	121	CAGGCAGTACCTGGTGATACCATGCAGACTAGACATGTGATCAACAATCACGTGAGGTCA
Recombinant	116T.....C.....
native	181	GAATCTACAATTGAGAACTTCCTTGCCAGATCAGCGTGTGTTTTCTACCTAGAGTACAAG
Recombinant	176TG.....
native	241	ACAGGGACCAAAGAGGATTCCAATAGCTTCAACAATTGGGTGATTACAACCAGGCGAGTG
Recombinant	236G.....G.....
native	301	GCTCAACTACGTAGAAAACGGAAATGTTTACTTACCTACGGTTTGACATGGAAATCACC
Recombinant	296	.G.....T.....
native	361	GTGGTCATTACAAGCTCGCAAGATCAGTCTACATCACAAAACCAGAAATGCACCAGTGCTA
Recombinant	356
native	421	ACACACCAGATAATGTATGTACCACCAGGGGGACCCATACCCGTAAGCGTGGATGATTAC
Recombinant	416A.....
native	481	AGCTGGCAAACATCCACCAACCCAGTATCTTTTGGACCGAAGGGAACGCTCCGGCACGC
Recombinant	476T.....
native	541	ATGTCAATTCCATTTATTAGCATAGGCAATGCGTATAGTAATTTCTACGATGGGTGGTCT
Recombinant	536A.....
native	601	CACTTCTCCCAGGCTGGCGTGTATGGCTTCACTACTCTGAACAACATGGGTCAATTGTTC
Recombinant	596
native	661	TTCCGGCACGTAAACAAGCCCAACCCAGCCGCTATTACAAGTGTGGCGCGCATTACTTC
Recombinant	656
native	721	AAACCGAAACATGTACGCGCTTGGGTGCCTAGACCACCGCGCTTGTGTCCATACATCAAT
Recombinant	716
native	781	AGCACGAATGTCAACTTTGAACCAAGCCAGTGACTGAAGTACGTACCAACATAATAACA
Recombinant	776
native	841	ACG-----
Recombinant	836	...ATCATCGCGGCCGCACAGCTGTATACAGTGCAAGCCAGCCAGAACTCGCCCCGAA
native		-----
Recombinant	896	GACCCCGAGGATCTCGAGCACCACCATCACCATCACCATCAC

Figure 7

6/7

Native	1	ATGGGAGCACAGGTATCAACACAGAAGACCGGGGCGCACGAGACTAGCTTGAGCGCTACT
Recombinant	1CGAT.TC.....
Native	61	GGCAACTCCATAATACACTACACGAATATTAATTATTACAAAGATGCAGCCTCTAACTCT
Recombinant	61C.....
Native	121	GCCAATAGACAAGATTTACCCCAAGACCCTGGTAAGTTTACTGAACCAATGAAAGATGTC
Recombinant	121C..G.....
Native		181 ATGATAAAAACCCTGCCAGCGCTGAAT-----
Recombinant	181TCGTAG

Figure 8

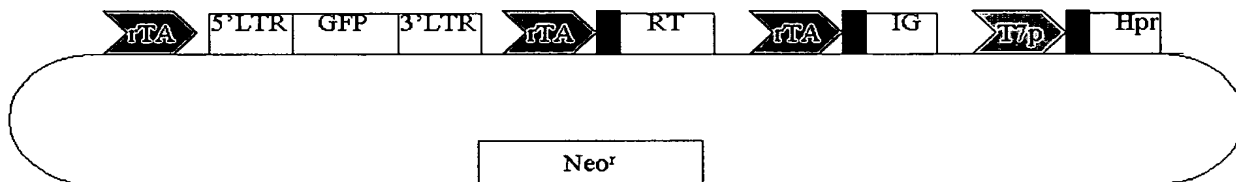


Figure 9

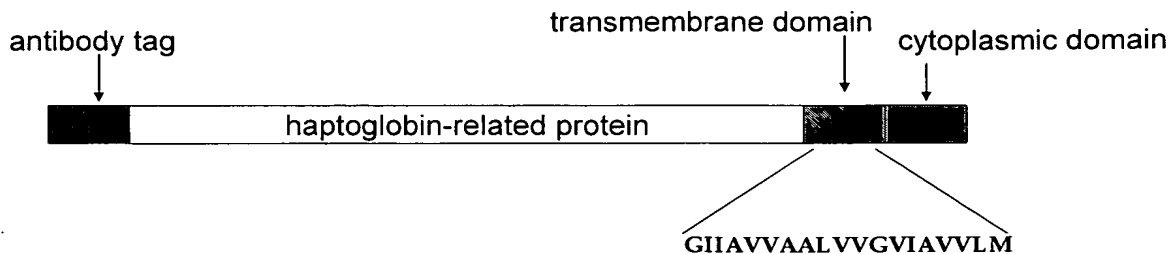


Figure 10

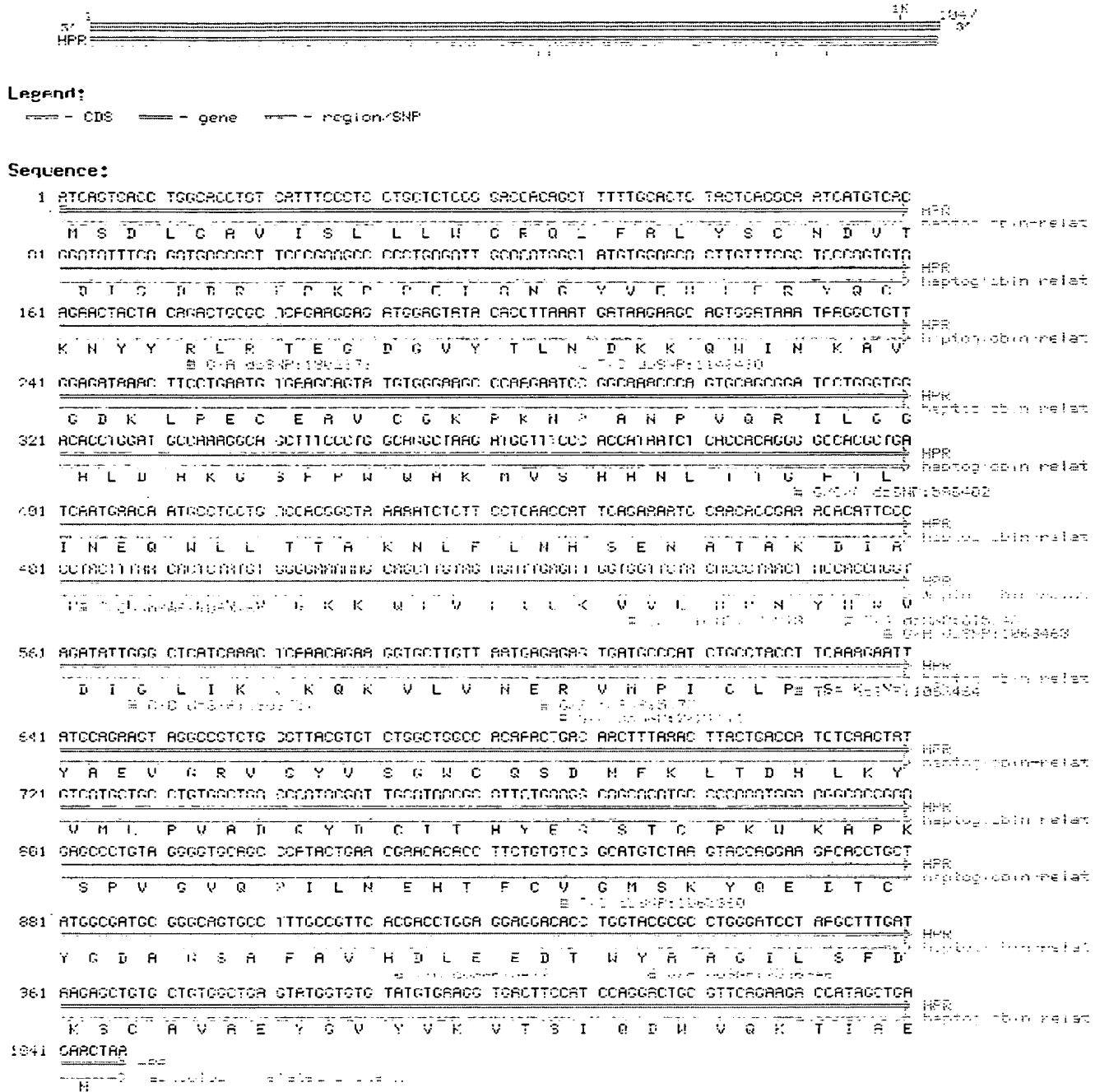


Figure 11